



PROMINENT LUNENBURGERS
Remembering the People that Make Us Special
1753-2018

Captain Alexander Lewis Knickle

b. July 31, 1858 in Heckman's Island d. March 22, 1934 in Lunenburg Buried at Hillcrest Cemetery, Lunenburg.

***Associated Places: Lunenburg Waterfront - 170 Montague Street
Residence - 40 Hopson Street***

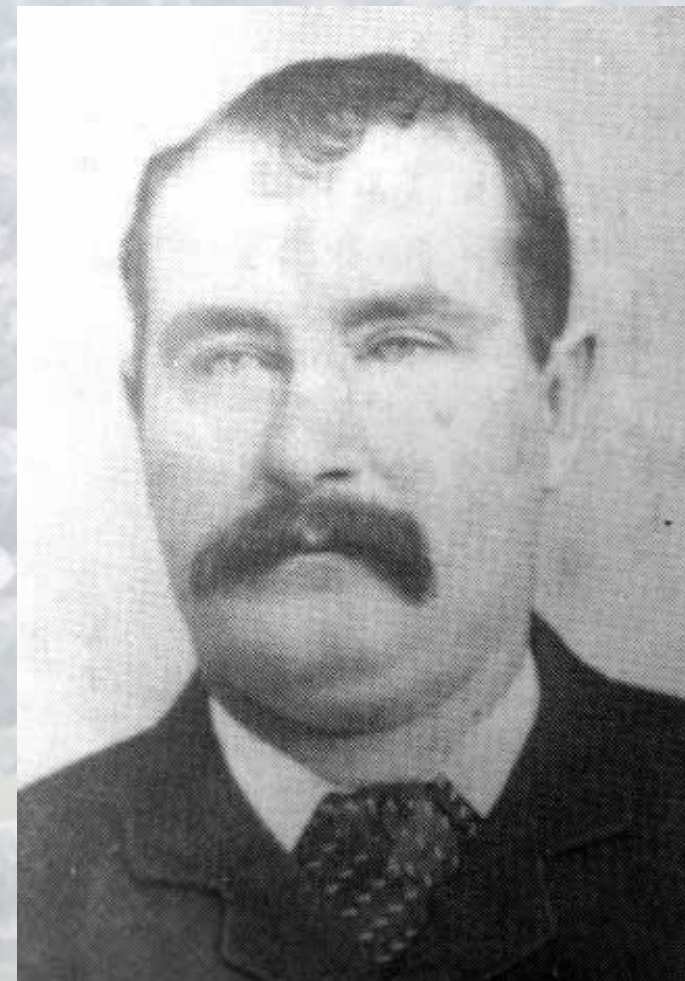
Contributions: Fishing Industry

Capt. Knickle was a son of the late Mr. and Mrs. Lewis Knickle and was a direct descendant of Lunenburg County settlers. He married Annetta E. Anderson, sister of Maude, who was married to Henry William (Harry) Adams. Alexander and Annetta had two children, Everett Anderson and Jean Maude (Mrs. Roy Whynacht).

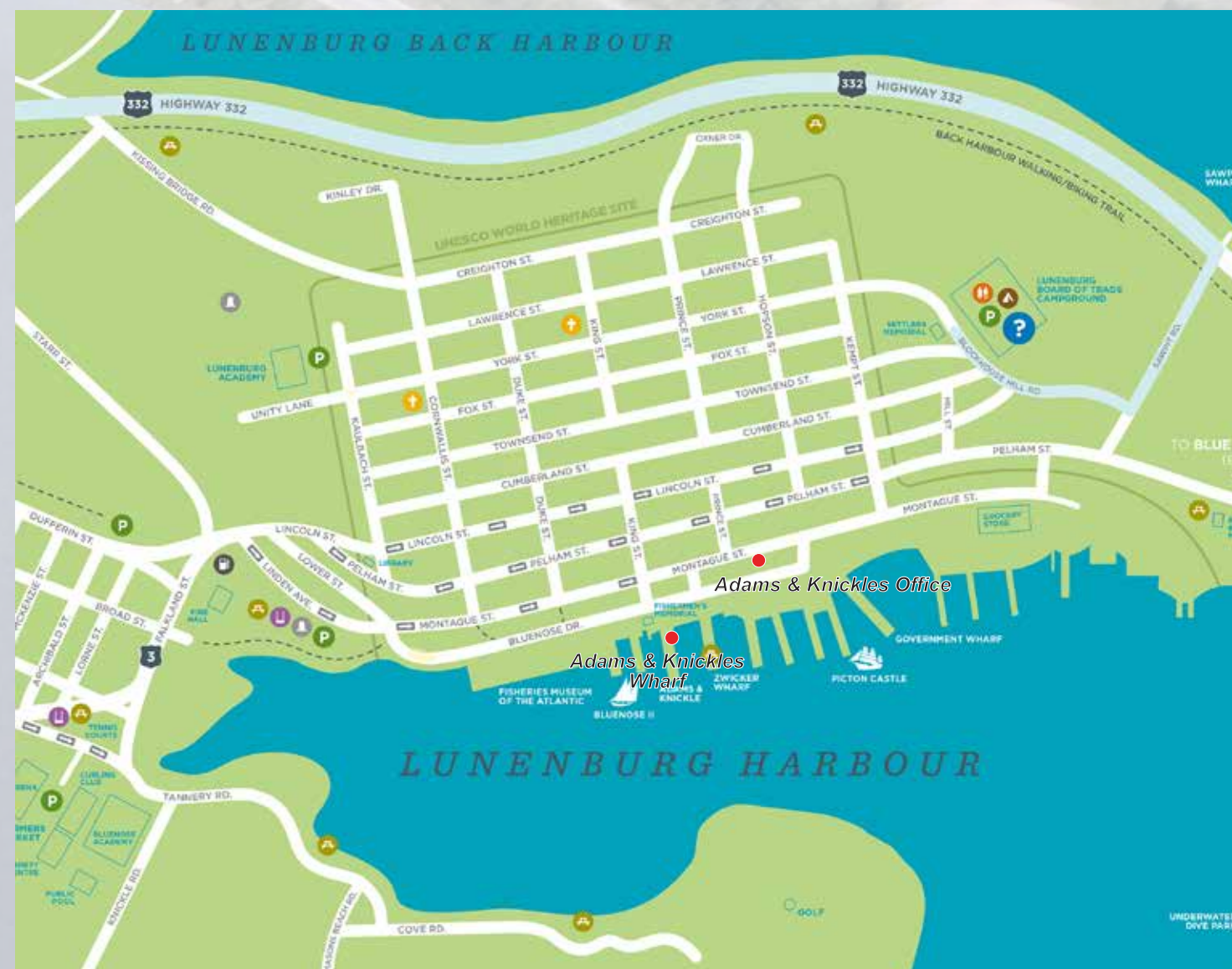
Alexander began his career as a fishing captain and was one of Lunenburg's most successful skippers. Together with Harry Adams, their partnership began as they founded Adams & Knickle in 1897. In the beginning years, the company outfitted vessels, and eventually, owned and operated a large fleet of schooners. These vessels caught and transported salt fish from Nova Scotia and Newfoundland to ports in Bermuda, Brazil, British West Indies, Cuba, Grand Turk Island and Puerto Rico.

Over the decades the fishing industry has evolved in its technology with a focus on conservation, sustainability and good management. Adams & Knickle harvests deep sea scallops from its home port of Lunenburg. David Knickle, the great-grandson of Alexander, is the General Manager and is joined by Jane Adams Ritcey, President, who is the granddaughter of Harry Adams.

The Adams & Knickle iconic red buildings on Lunenburg's working waterfront continue in operation today and remain an historic symbol of Lunenburg's ties to the fishing industry.



Alexander Lewis Knickle



Adams and Knickle Ltd.