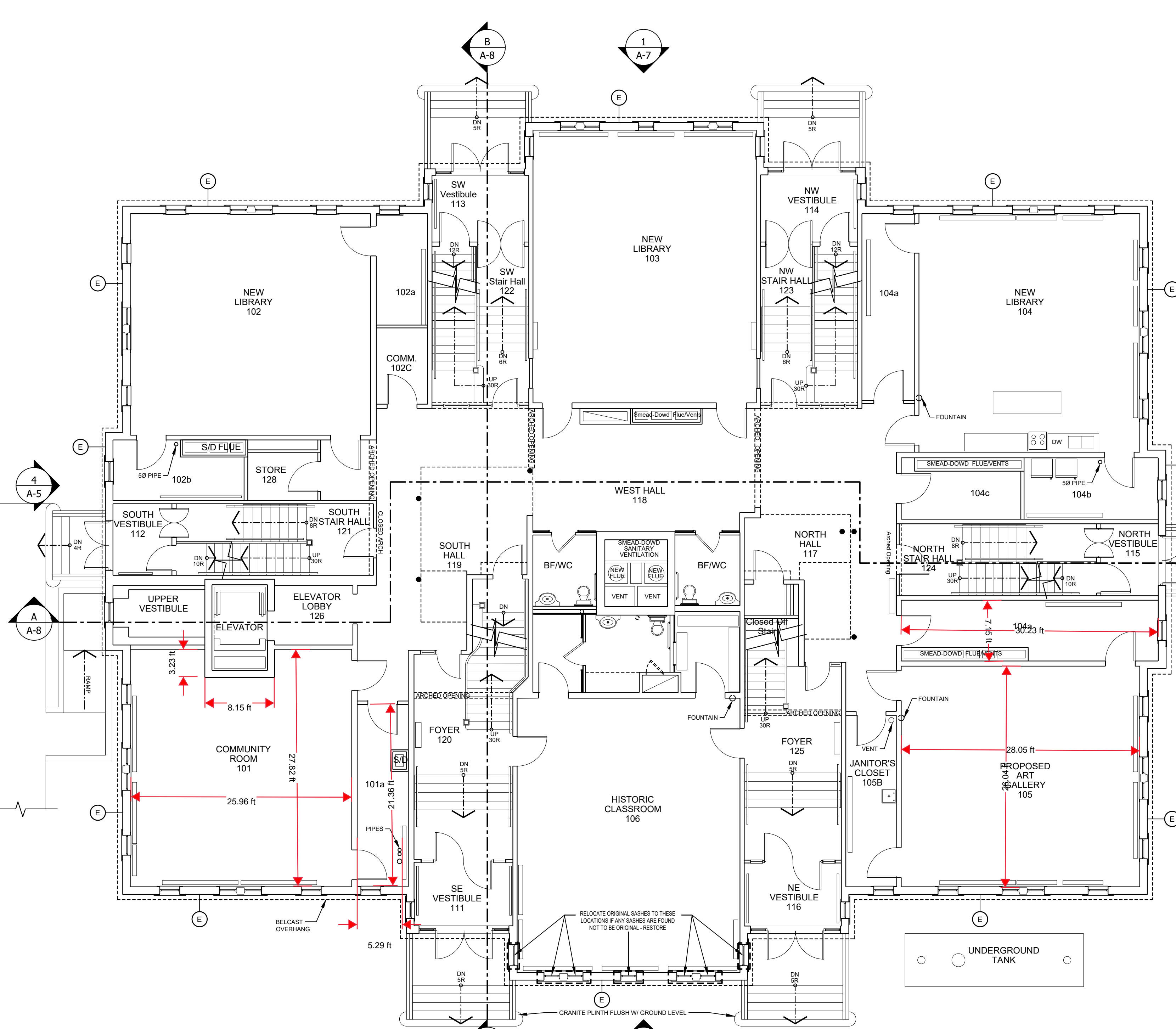


1 BASEMENT PLAN
SCALE: 1/8" = 1'-0"

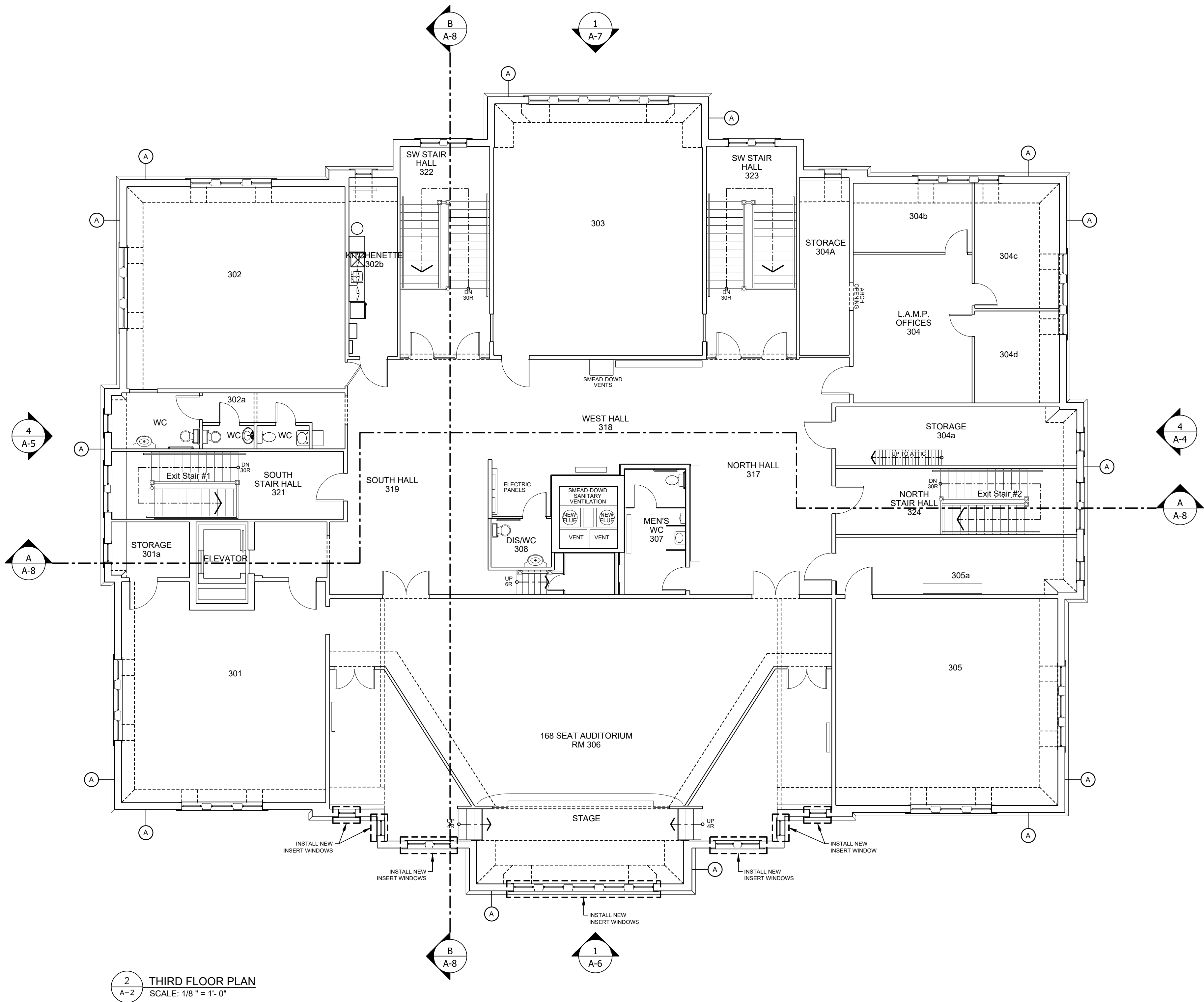
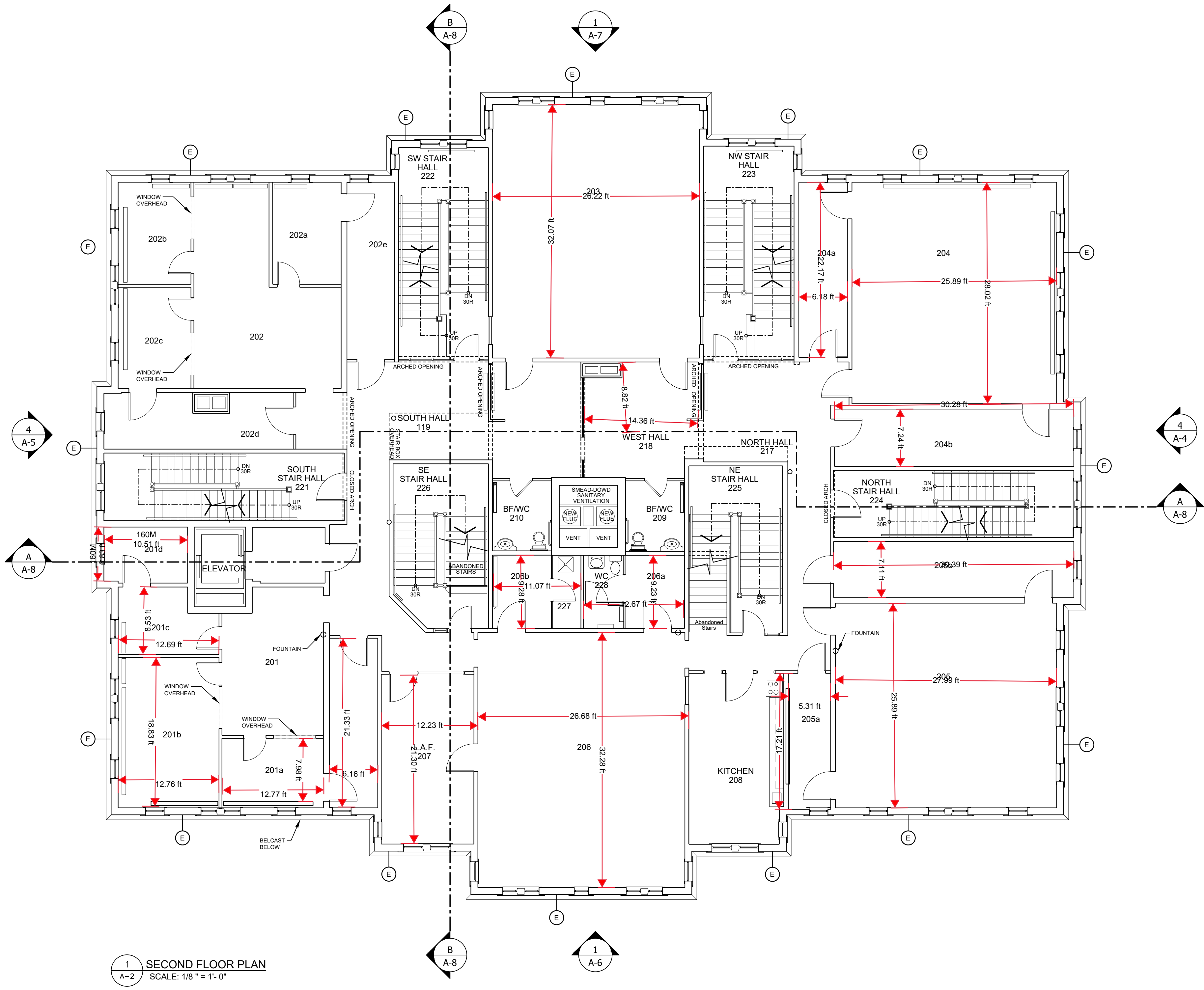


2 FIRST FLOOR PLAN
SCALE: 1/8" = 1'-0"

DSRA DESIGN SERVICES, INC. 1502 LINDSEY DRIVE, SUITE 200 LUNEBURG, MA 01462 TEL: 978-686-1111 FAX: 978-686-1112 WWW.DSRA.COM	PROJECT: LUNEBURG ACADEMY EXTERIOR CONSERVATION PROGRAM 2017	DATE: 10/13/17	SCALE: AS SHOWN
	DESIGNER: DSRA	CHECKED BY: GFD	ISSUED FOR TENDER: 10/13/17

1 ISSUED FOR TENDER 10/13/17
 2 REVISION
 3 REVISION
 4 REVISION

BASEMENT & FIRST FLOOR PLANS
A-1



DSRA

1502 120 9900 3455 Spring Green Road, 4th Floor
1502 120 9900 Normal, Iowa 52242, USA
TEL: 319.335.7777 FAX: 319.335.7778
WWW.DSRA.COM

EXTERIOR CONSERVATION PROGRAM 2017

LUNENBURG ACADEMY

37 KENNETH ST., LUNENBURG, IOWA 52242, USA

OSMA JOB # 16137

DRAWN BY: DDJ/AOMT

CHECKED BY: GFD

SCALE: AS SHOWN

1 ISSUED FOR TENDER 09/14/2017

2 REVISION DATE

168 SEAT AUDITORIUM RM 306

STAGE

INSTALL NEW INSERT WINDOWS

NOTES:

A. REFER TO SHEET 201 FOR EXTERIOR FINISHES.

B. REFER TO SHEET 202 FOR INTERIOR FINISHES.

C. REFER TO SHEET 203 FOR MECHANICAL FINISHES.

D. REFER TO SHEET 204 FOR ELECTRICAL FINISHES.

E. REFER TO SHEET 205 FOR PAINT FINISHES.

F. REFER TO SHEET 206 FOR FLOOR FINISHES.

G. REFER TO SHEET 207 FOR CEILING FINISHES.

H. REFER TO SHEET 208 FOR WINDOW FINISHES.

I. REFER TO SHEET 209 FOR DOOR FINISHES.

J. REFER TO SHEET 210 FOR STAIR FINISHES.

K. REFER TO SHEET 211 FOR RAMP FINISHES.

L. REFER TO SHEET 212 FOR ELEVATOR FINISHES.

M. REFER TO SHEET 213 FOR SIGNAGE FINISHES.

N. REFER TO SHEET 214 FOR LIGHTING FINISHES.

O. REFER TO SHEET 215 FOR FURNITURE FINISHES.

P. REFER TO SHEET 216 FOR LANDSCAPE FINISHES.

Q. REFER TO SHEET 217 FOR SITEWORK FINISHES.

R. REFER TO SHEET 218 FOR UTILITY FINISHES.

S. REFER TO SHEET 219 FOR SPECIALTIES FINISHES.

T. REFER TO SHEET 220 FOR OTHER FINISHES.

168 SEAT AUDITORIUM RM 306

STAGE

INSTALL NEW INSERT WINDOWS